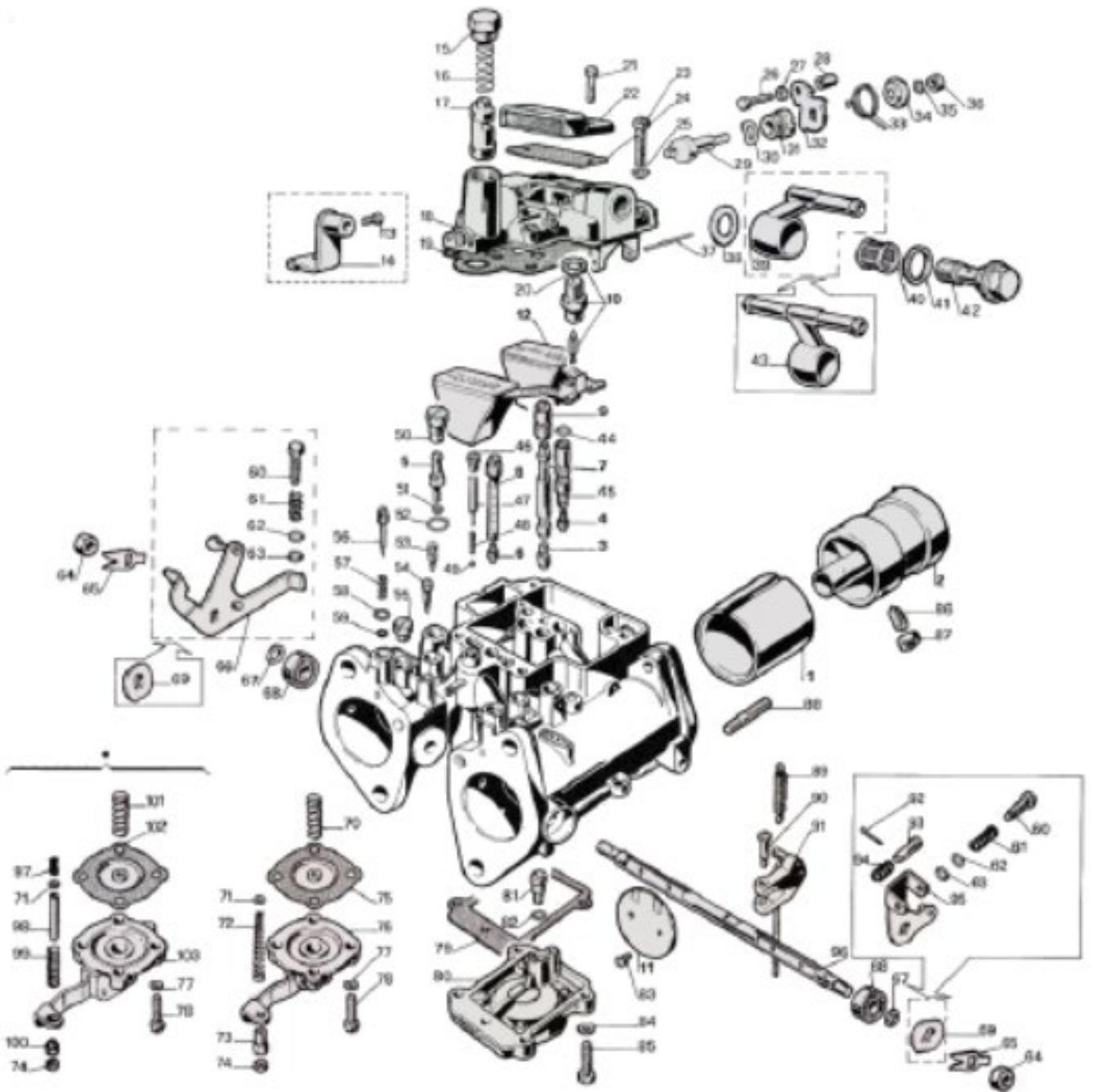


DELLORTO 40 DHLA G - exploded view



DELLORTO 40 DHLA G - Parts list

No Part No Price Pcs Description	No Part No Price Pcs Description
1 8383-32.65 Choke tube	52 6426-30 Pump jet cap fibre washer
2 7848-3.68 Auxiliary venturi	53 8176-37 Air bypass
3 7484-145.02 Main jet	54 7959-34 Vacuum blanking screw
4 7644-58.02 Idle jet	55 8857-34 G/H prog. blanking screw
5 8083-35.02 Pump jet	56 9335-37 Idle mixture screw
5 8083-40.02 Pump jet	57 9336-61 Mixture screw spring
6 3315-80.02 Starter jet	58 8260-23 Mixture screw washer
7 7772-10.28 Main emulsion tube	59 8678-30 Air bleed screw O ring
8 7482-3.28 Starter emulsion tube	60 6898-36 Throttle stop screw
9 7485-240.01 Air corrector	61 4670-61 Throttle stop screw spring
10 8811-150.33 Needle valve	62 4650-23 Washer
11 7481-3.64 Throttle plate	63 7540-30 O ring
12 7298-1.80 Float 10gr	64 6423-27 Spindle nut
13 6434-36 Fixing screw	65 6581-23 Spindle nut lock washer
14 7488-63 Cold start cable holder	66 7516-26 Throttle lever
15 7501-34 Cold start cover	67 7537-23 Spindle washer
16 7413-61 Cold start spring	68 7490-45 Spindle bearing
17 7548-64 Cold start plunger	69 7958-23 Spindle end cover
18 8183-54 Top cover	70 7626-61 Pump Diaphragm Spring
19 9358-30 Top cover gasket	71 8260-23 Washer
20 6425-30 Needle valve gasket	72 9636-61 Pump rod spring
21 7530-36 Jet cover screw	73 7625-27 Pump rod nut
22 7549-06 Jet cover	74 6390-27 Pump rod lock nut
23 6430-36 Top cover screw	75 7515-44 Pump Diaphragm
24 7511-30 Jet cover gasket	76 7502-67 Pump diaphragm cover
25 4997-23 Top cover spring washer	77 5011-23 Spring washer (pump cover)
26 7062-36 Cold start inner cable clamp	78 6429-36 Screw (pump cover)
27 6850-23 Cable clamp washer	79 7509-30 Pump body gasket
28 6432-27 Cold start cable clamp nut	80 7550-90 Pump body
29 7498-39 Cold start lever cam	81 7542-33 Pump non-return valve
30 7837-23 Actuator cam spring washer	82 7540-30 Washer
31 7853-34 Cold start cam cover	83 6416-36 Throttle plate screw
32 7341-26 Cold start lever	84 4997-23 Diaphragm cover spring washer
33 7854-61 Cold start cable return spring	85 7526-36 Pump body screw
34 7838-20 Cold start spring cup washer	86 7507-36 Venturi grub screw
35 4957-23 Spring washer	87 6423-27 Grub screw nut
36 2906-27 Choke spring retaining nut	88 7630-36 Stud
37 7503-22 Float pivot pin	89 7957-61 Throttle return spring (std)
38 7663-30 Banjo fibre washer, inner	90 7667-36 Pump rod clamp screw
39 7660-38 Fuel banjo, single standard	91 8307-26 Pump rod assy
40 1419-29 Fuel filter	92 3793-21 Split pin (balance lever)
41 7662-30 Banjo fibre washer, outer	93 7496-22 Balance lever pin

42 7659-34 Banjo bolt	94 2638-61 Balance lever spring
43 7661-38 Fuel banjo, double standard	95 8304-26 Lotus balance lever
44 7540-30 Idle jet gasket	96 7668-39 Throttle spindle
45 8869-32 Idle jet holder	97 9336-61 Pump rod spring
46 7513-34 Counterweight Cap screw	98 9662-35 Pump rod tube
47 9337-42 Counterweight	99 9664-61 Pump rod spring
48 8543-61 Counterweight spring	100 6782-27 Pump rod nut
49 6415-03 Pump jet ball bearing	101 9663-61 Pump diaphragm spring
50 7852-34 Pump jet holder	102 9667-44 Pump diaphragm
51 6173-30 Pump jet gasket	103 9665-67 Pump diaphragm cover